



1815 Black Falcon Lane NE  
Bolivia, NC 28422

910.898.4398

WilmingtonInfo@drhorton.com

A superb location and thoughtful floor plans makes Eagle Creek an excellent value



Welcome to Eagle Creek located in South Brunswick County offering beautiful homes in a superb location. The heart of your home incorporates an open concept design with the kitchen, family and dining sharing a large space anchored by an island or peninsula great for gathering, entertaining and catching up on your day. An excellent location, thoughtful floorplans, and outstanding features makes Eagle Creek an excellent new home value.

**D·R·HORTON®**

*America's Builder*

[drhorton.com/wilmington](http://drhorton.com/wilmington)



D.R. Horton is an equal housing opportunity builder. Home and community information, including pricing, included features, terms, availability and amenities, are subject to change and prior sale at any time without notice or obligation. Pictures, photographs, features, colors and sizes are approximate for illustration purposes only and will vary from the homes as built. All homes constructed by D.R. Horton, Inc. License #29676.



# Kerry

3 Bedrooms, 2 Baths  
2-Car Garage, 1476 Sq. Ft.



# Aria

3 Bedrooms, 2 Baths  
2-Car Garage, 1618 Sq. Ft.



D.R. Horton is an equal housing opportunity builder. Home and community information, including pricing, included features, terms, availability and amenities, are subject to change and prior sale at any time without notice or obligation. Pictures, photographs, features, colors and sizes are approximate for illustration purposes only and will vary from the homes as built. All homes constructed by D.R. Horton, Inc. License #29676.



# Kerry

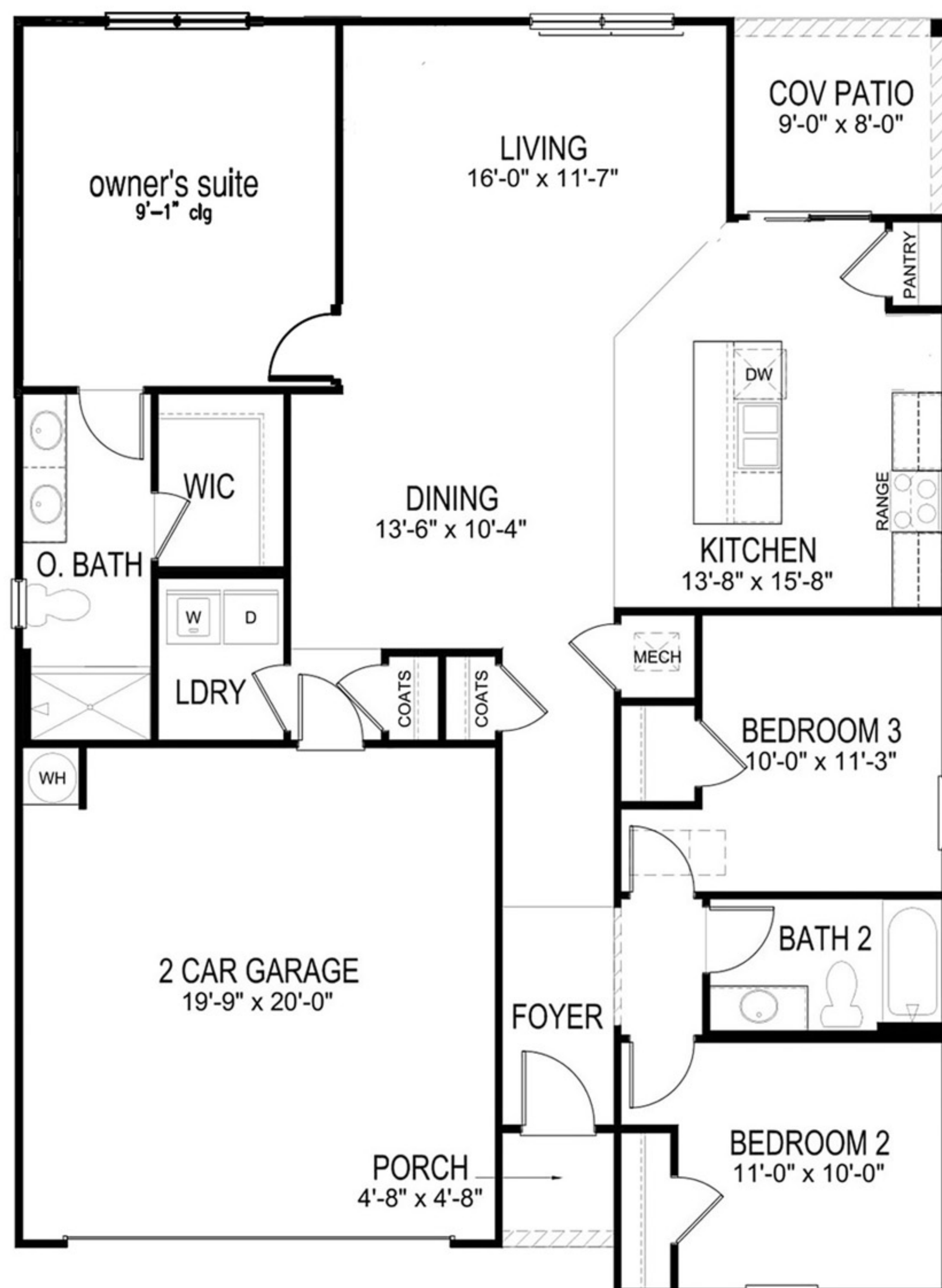
3 Bedrooms, 2 Baths  
2-Car Garage, 1476 Sq. Ft.



Elevation A



Elevation B



# Aria

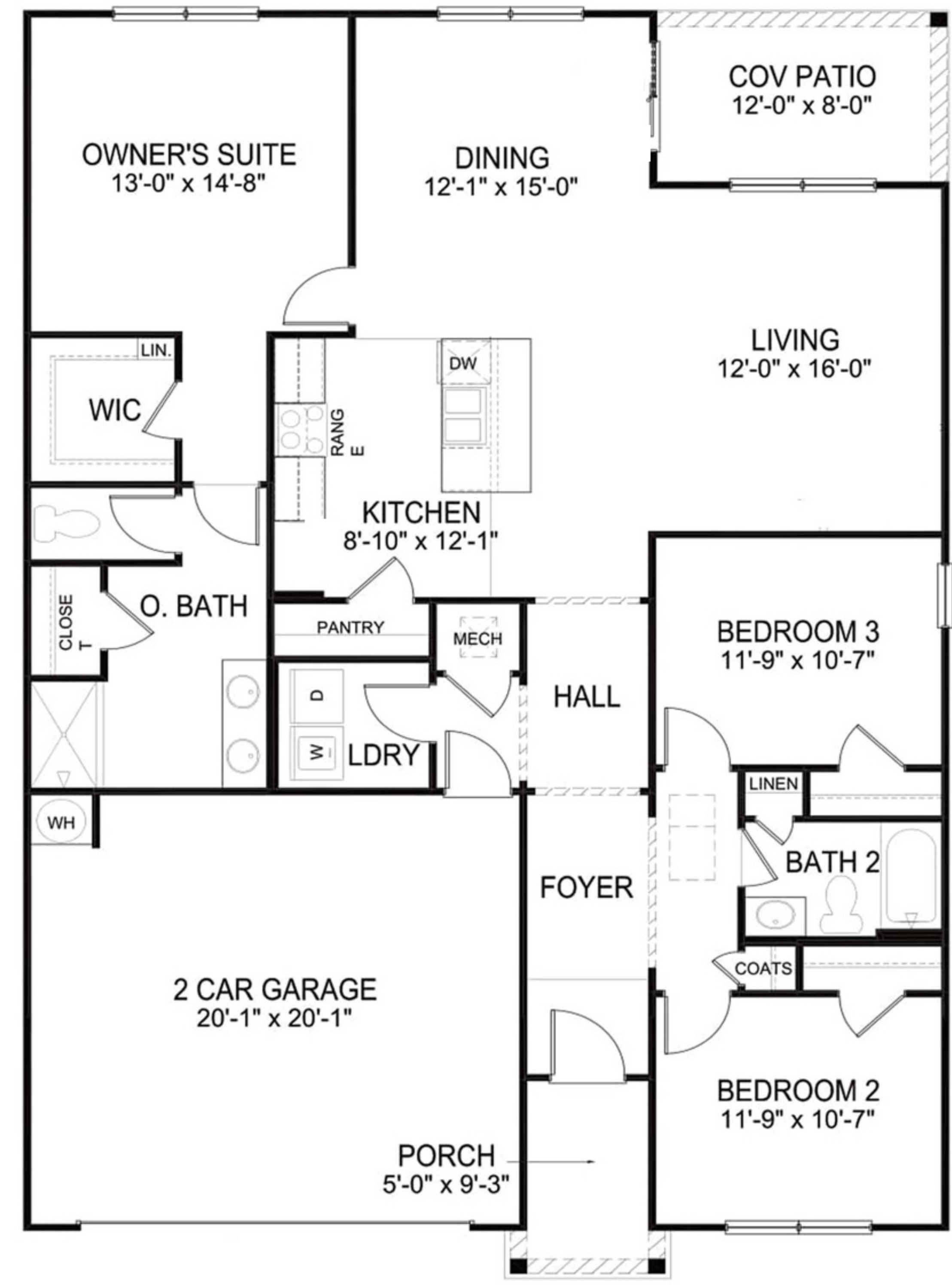
3 Bedrooms, 2 Baths  
2-Car Garage, 1618 Sq. Ft.



Elevation A



Elevation B



D.R. Horton is an equal housing opportunity builder. Home and community information, including pricing, included features, terms, availability and amenities, are subject to change and prior sale at any time without notice or obligation. Pictures, photographs, features, colors and sizes are approximate for illustration purposes only and will vary from the homes as built. All homes constructed by D.R. Horton, Inc. License #29676.



# Cali

4 Bedrooms, 2 Baths  
2-Car Garage, 1774 Sq. Ft.



# Dover

3 Bedrooms, 2 Baths, Flex Room  
2-Car Garage, 2368 Sq. Ft.  
Option: BR 4 | Second Floor BR 5 / BA 3



All of our homes include D.R. Horton's Home is Connected® package, an industry leading suite of smart home products that keeps homeowners connected with the people and place they value the most. The technology allows homeowners to monitor and control their home from the couch or across the globe. Control the thermostat, front door light and lock, and video doorbell from your smartphone or with voice commands to Alexa!



# Cali

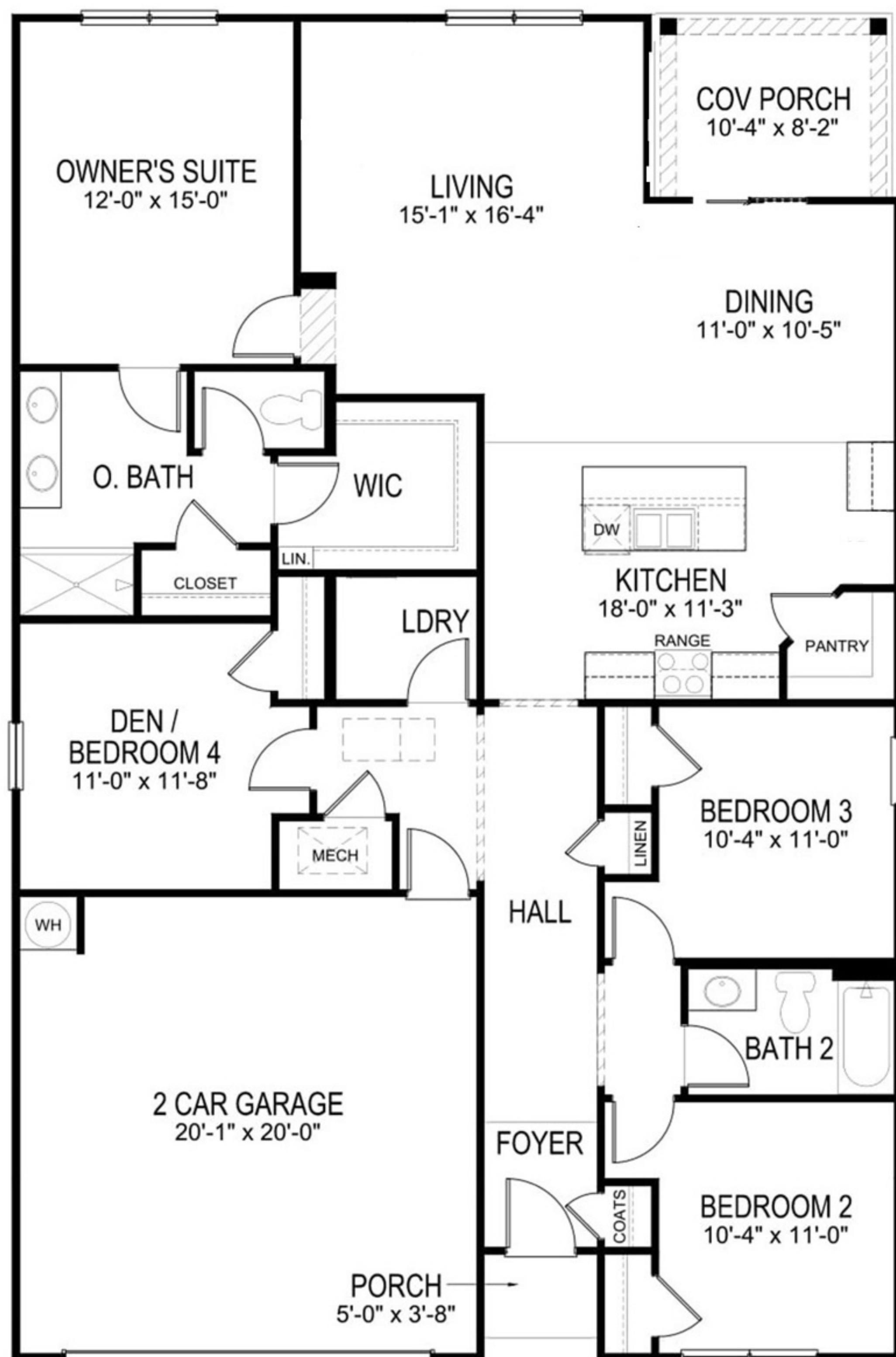
4 Bedrooms, 2 Baths  
2-Car Garage, 1774 Sq. Ft.



Elevation A



Elevation B



# Dover

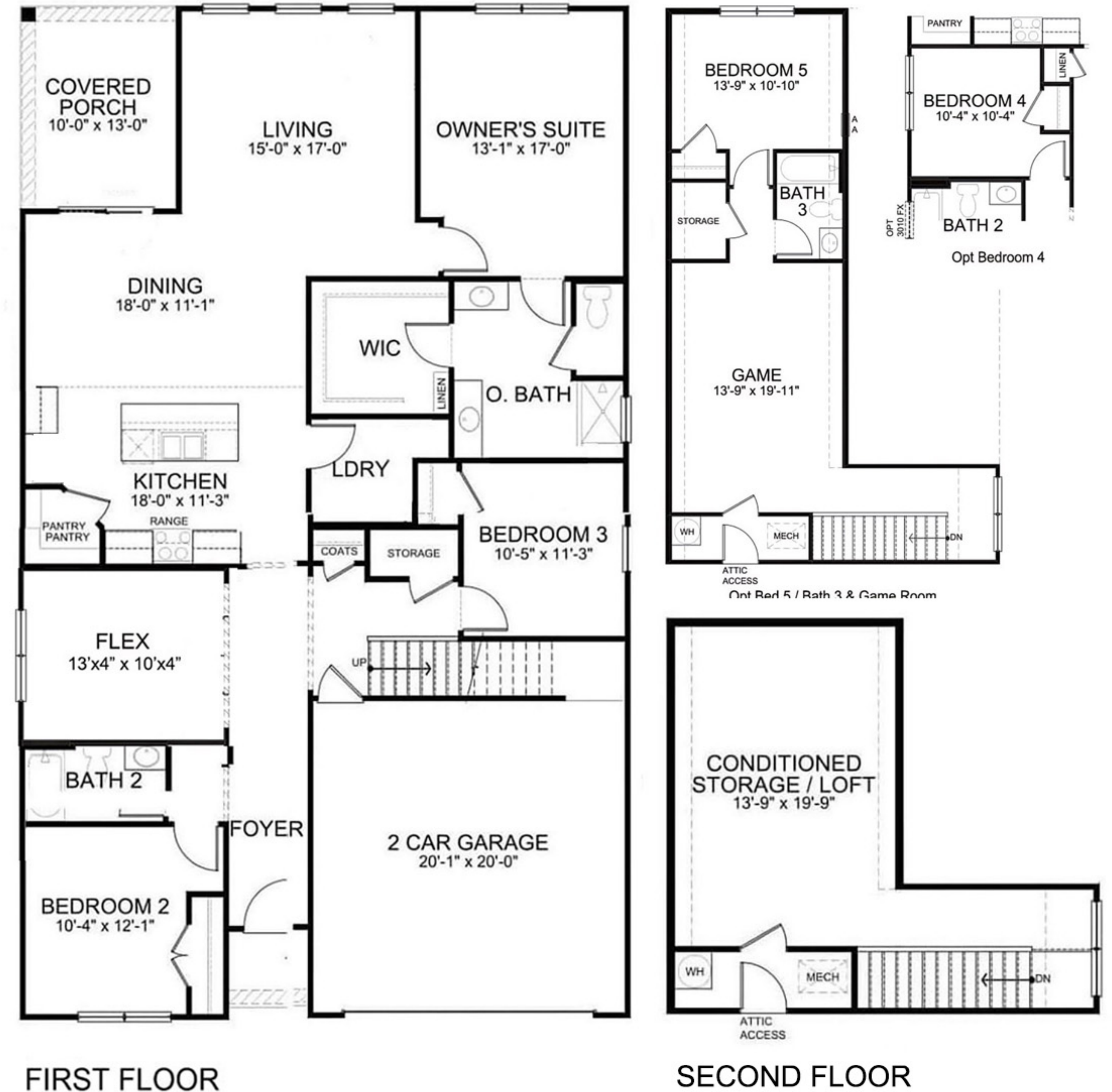
3 Bedrooms, 2 Baths, Flex Room  
2-Car Garage, 2368 Sq. Ft.  
Option: BR 4 | Second Floor BR 5 / BA 3



Elevation A



Elevation C



All of our homes include D.R. Horton's Home is Connected® package, an industry leading suite of smart home products that keeps homeowners connected with the people and place they value the most. The technology allows homeowners to monitor and control their home from the couch or across the globe. Control the thermostat, front door light and lock, and video doorbell from your smartphone or with voice commands to Alexa!

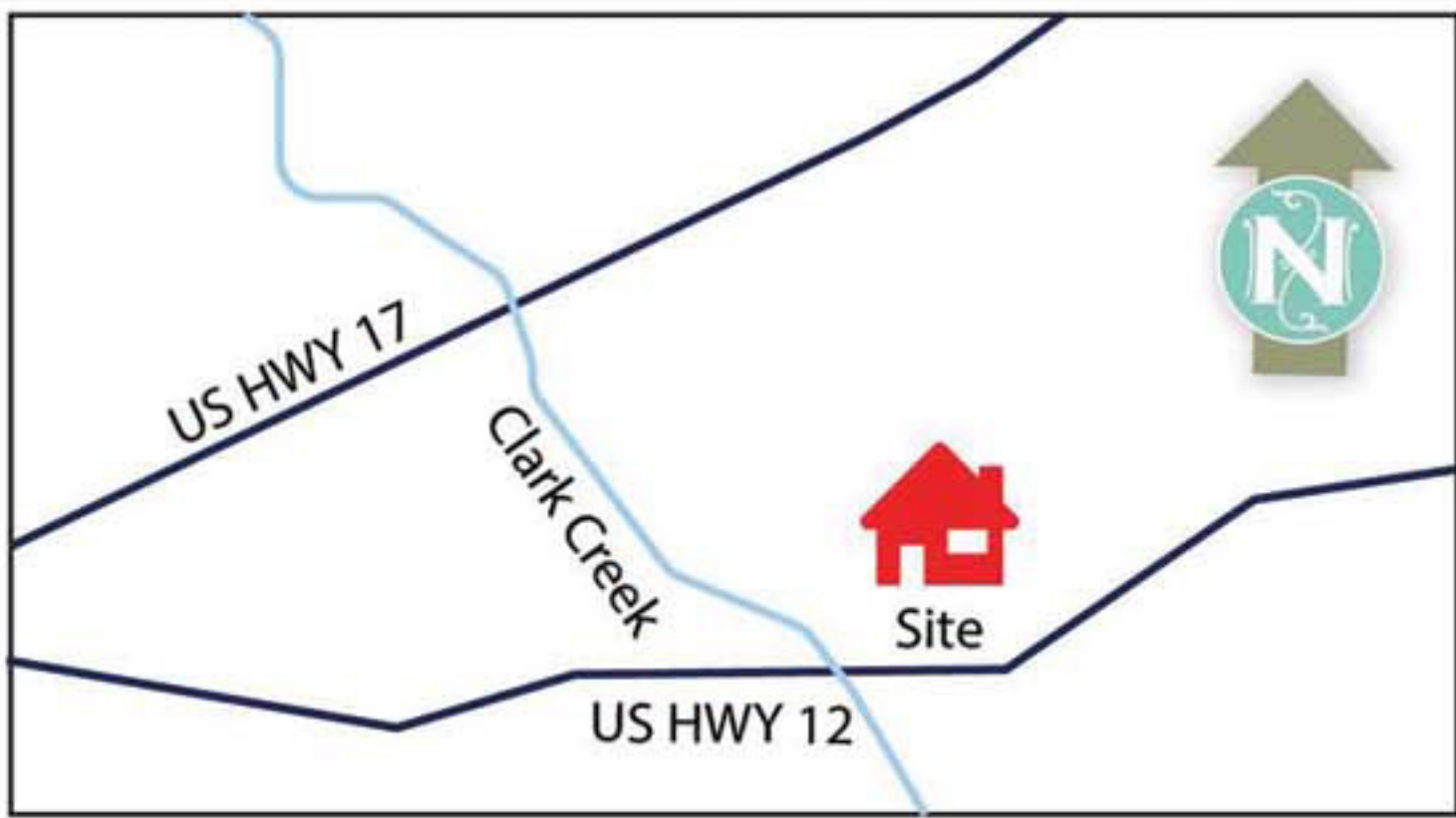


# AREAS OF INTEREST

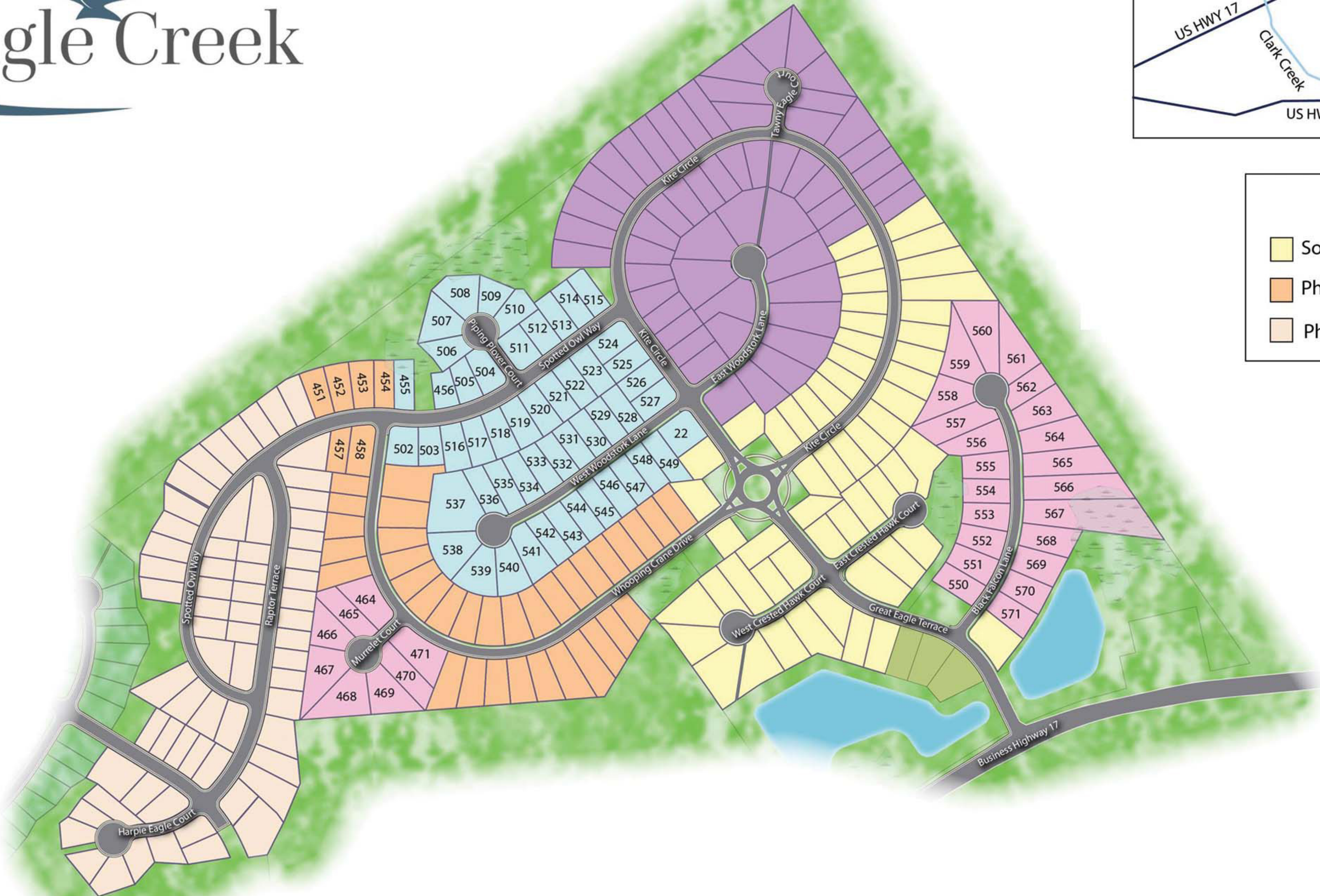


Whether you want to shop, dine or be entertained there is plenty to do around the area, but if you just want to get away from the daily bustle and relax, we will offer just that, a daily escape to recharge.

# HOMESITES



| Legend      |          |             |         |
|-------------|----------|-------------|---------|
| <div></div> | Sold Out | <div></div> | Phase 4 |
| <div></div> | Phase 2  | <div></div> | Phase 5 |
| <div></div> | Phase 3  | <div></div> | Phase 6 |



Map is for presentation purposes only. Not drawn to scale.